

# PNA PERSONAL-EMERGENCY SIGNAL PLANT

At the right place at the right time

Detect

Filter

Escalate

Search/rescue

 **FELSENMEER**

# FELSENMEER PERSONAL-EMERGENCY SIGNAL PLANT (PNA)

Full safety as per DGUV rule 112-139 (formerly BGR 139)

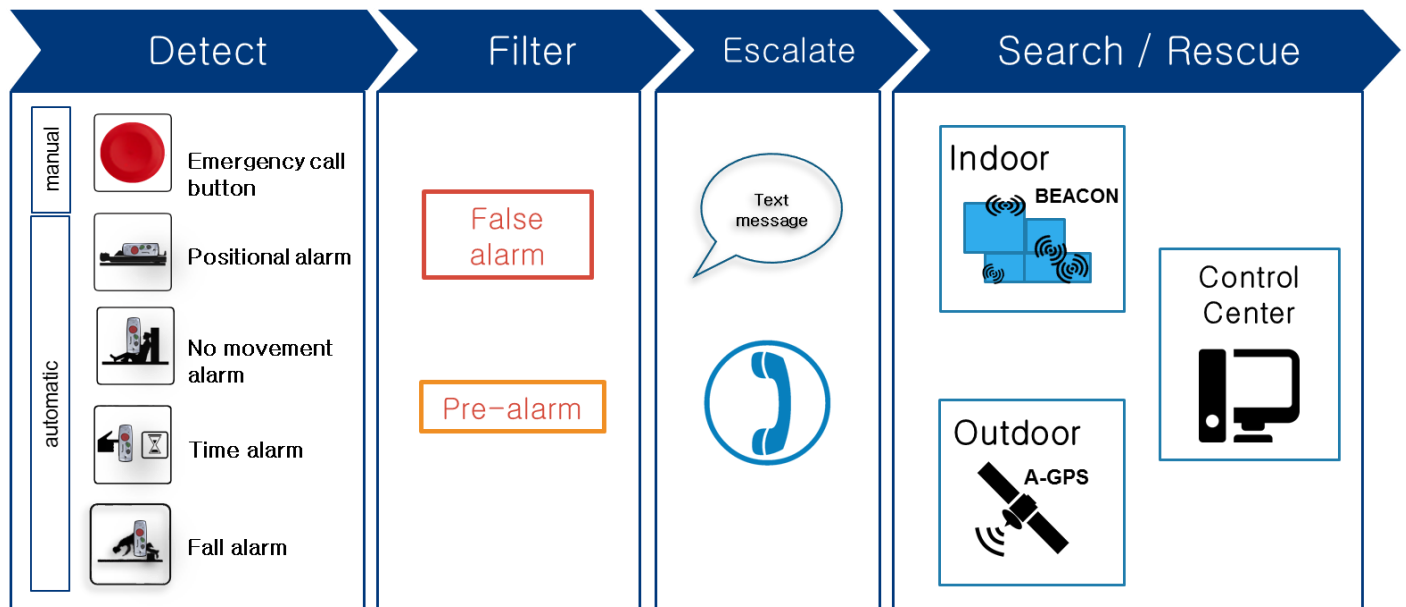
Felsenmeer Personal-emergency signal plant ensures efficient alarm handling for optimum personal security whilst using public telecommunication networks.

## What are the components of a good Personal-emergency signal plant?

Using the Felsenmeer PNA is to ensure that the necessary rescue measures can be initiated timely and selectively in an emergency situation. In addition to legal directives, we continue to develop our software and hardware and adjust them to technological changes. This is the only way for us to ensure that our clients have an effective and efficient PNA solution at their disposal.



## Application example



Felsenmeer personal-emergency signal plant has the necessary functions and complies with the defined maximum response times as per DGUV directive 112-139.

## Elements of the personal–emergency signal plant (PNA)

The Felsenmeer PNA consists of portable personal–emergency signal devices (PNG, German: **P**ersonen–**N**otsignal–**G**erät), the personal–emergency signal locator beacon (mostly for indoor locating) and a personal–emergency signal receiving centre (PNEZ, German for: **P**ersonen–**N**otsignal–**E**mpfangszentrale).

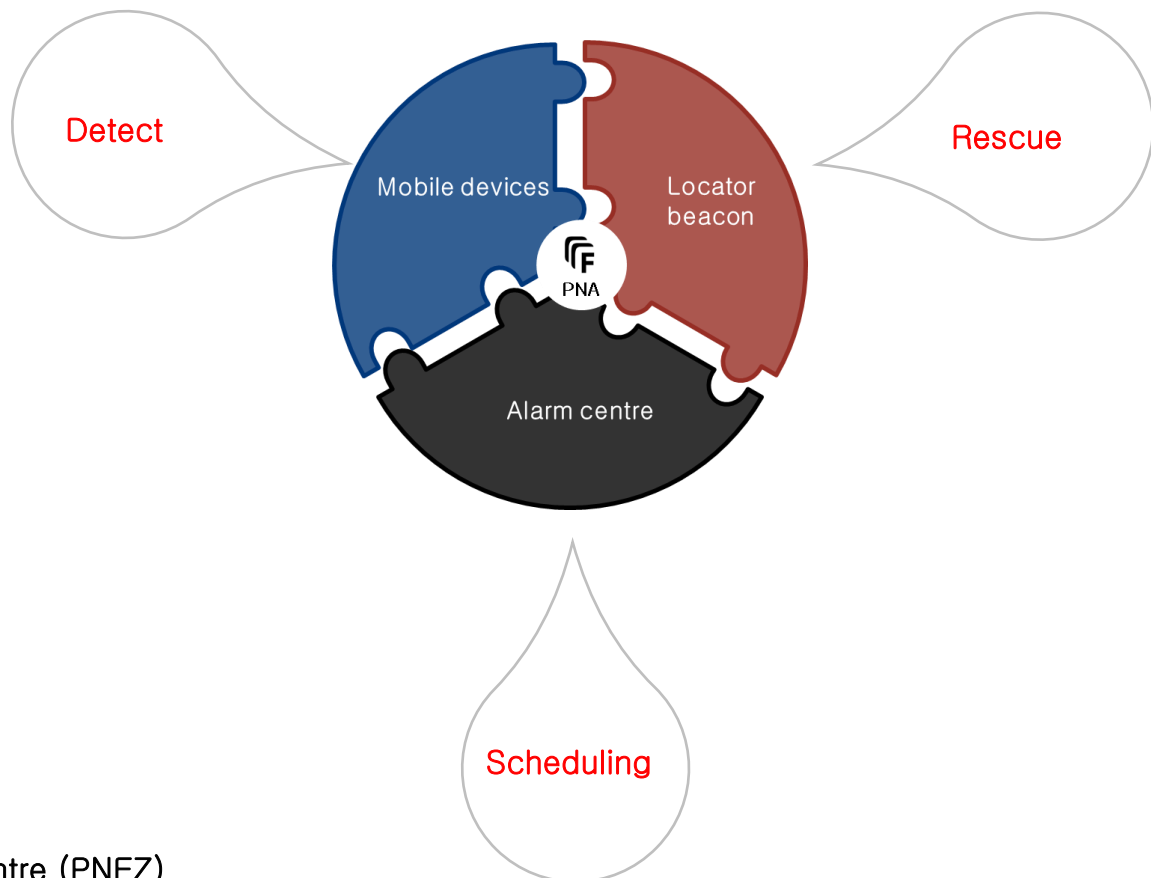
According to occupational safety legislation, hazards, which are connected to working alone, have to be determined and the working conditions have to be evaluated. After hazard detection and a separate risk evaluation as well as examining the probability of an emergency, there is the option to use the complete Felsenmeer PNA or, depending on the results, even just parts thereof. The Felsenmeer PNA is designed modularly and can be adjusted to its requirements and existing infrastructure.

### Mobile devices (PNG)

Personal–emergency signal devices (PNG) are wireless signal transmitters which have to be carried by vulnerable persons. These devices trigger a person alarm in the personal–emergency signal receiving centre either deliberately or automatically.

### Locator beacon

The locator beacon helps to find the person faster. It is a wireless and battery powered beacon which can be installed in fixed locations. It can also be used for outdoor locating.



### Alarm centre (PNEZ)

The personal–emergency signal receiving centre is used to establish and process alarm/status messages and locator information as well as for technical monitoring of personal–emergency signal devices and locator beacons.

## Functions of the personal-emergency signal plant (PNA)

### Detect

- Alarm types can be adjusted individually as per time or inclination angle
- Standstill monitors

### Filter

- Configurable pre-alarm
- Comfortable reset of the faulty alarm by pressing the button or movement sensor

### Escalate

- Storing a telephone directory and prioritisation for escalation
- Defining a text message group for the alarm
- Call! Query
- SOS emergency call to external rescue services

### Search & rescue

- Display the coordinates via the alarm centre
- Display the coordinates for the text message recipient
- Organise a telephone conference via external service providers

### Manned guarding

- Premises check per GPS, adjustable using time or distance
- Premises check using locator beacon, reaction based on time or recently found beacon

## Performance features of Felsenmeer Personal–emergency signal plant

<b>Supported PNG</b>	<ul style="list-style-type: none"> <li>• SHALOSH ECO</li> <li>• SHALOSH</li> <li>• GSM S EX PLUS</li> <li>• as well as previous models</li> </ul>
<b>Locator</b>	<ul style="list-style-type: none"> <li>• Option: Location display on map or sitemap using locator beacon BEACON ECO / CIPOLLINO BEACON / BEACON EX</li> <li>• GPS locator (only for SHALOSH and SHALOSH ECO)</li> </ul>
<b>Alarm messages</b>	<ul style="list-style-type: none"> <li>• Per text messages: Pressure, position, resting, time or fall alarm (fall alarm only for SHALOSH and SHALOSH ECO)</li> </ul>
<b>Escalation alarms</b>	<ul style="list-style-type: none"> <li>• New alarm</li> <li>• Not acknowledged</li> <li>• Not processed</li> <li>• Pop–up window (colours can be adjusted)</li> <li>• Time limits (individually adjustable)</li> <li>• Acoustic signalling</li> <li>• Melodies (adjustable)</li> </ul>
<b>Status messages</b>	<ul style="list-style-type: none"> <li>• login/logout</li> <li>• “112” dialled</li> <li>• Sensor test failed</li> <li>• Connection test</li> <li>• Battery / rechargeable battery weak</li> <li>• Rechargeable battery empty / device switches off</li> </ul>
<b>Edit messages</b>	<ul style="list-style-type: none"> <li>• Enter comments</li> <li>• Reset messages</li> </ul>
<b>Device configuration</b>	<ul style="list-style-type: none"> <li>• Sort according to device groups</li> <li>• Save in database</li> <li>• Per text message</li> </ul>
<b>Device control</b>	<ul style="list-style-type: none"> <li>• Acoustic vicinity locating</li> <li>• Hands–free mode</li> </ul>
<b>Map material</b>	<ul style="list-style-type: none"> <li>• Offline maps <ul style="list-style-type: none"> <li>◦ Individual country maps for Europe</li> <li>◦ Overall Europe map (worldwide upon request)</li> <li>◦ Integration of site maps and building layouts is possible</li> </ul> </li> </ul>
<b>Screen window</b>	<ul style="list-style-type: none"> <li>• Device status</li> <li>• Map / site map</li> <li>• Message list</li> <li>• Device configuration</li> </ul>
<b>Logview:</b>	<ul style="list-style-type: none"> <li>• Integration in GUI &amp; authentication</li> <li>• Integration in client’s own application possible</li> </ul>
<b>User rights</b>	<ul style="list-style-type: none"> <li>• Administrator</li> <li>• Configurator</li> <li>• Users</li> </ul>
<b>Archiving:</b>	<ul style="list-style-type: none"> <li>• Integrated backup and restore routines to backup all PNEZ DBs</li> </ul>
<b>Data security:</b>	<ul style="list-style-type: none"> <li>• Data access only by authentication incl. backup and restore</li> </ul>
<b>Database:</b>	<ul style="list-style-type: none"> <li>• MS–SQL–Server, MS–SQL–Server Express</li> </ul>
<b>Network connection:</b>	<ul style="list-style-type: none"> <li>• Client–Server, IPv4 &amp; IPv6, Socket–connection can be used bi–directional</li> </ul>
<b>Language version:</b>	<ul style="list-style-type: none"> <li>• German</li> <li>• English</li> <li>• Other languages on request.</li> </ul>

# you'll never work alone

## Felsenmeer Personal-emergency signal plant

SHALOSH ECO



BEACON ECO



FELSENMEER ALARM CENTRE



GSM S EX PLUS



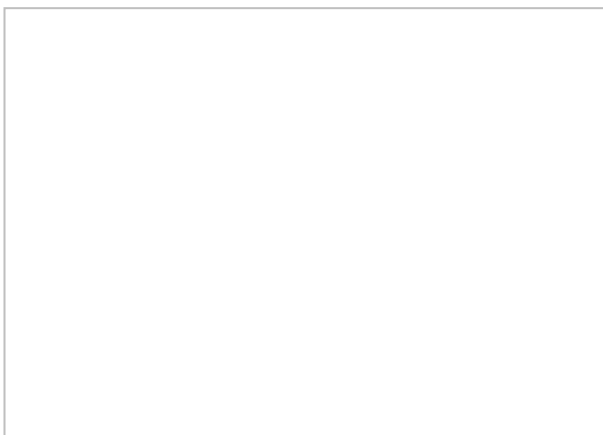
BEACON EX



FELSENMEER ALARM SERVER



## Your contact



Felsenmeer AG  
Opfikerstrasse 45  
CH-8304 Wallisellen



Phone: +41 44 500 30 50  
Fax: +41 44 500 33 51  
Email: [info@felsenmeer.ch](mailto:info@felsenmeer.ch)  
Web: [www.felsenmeer.ch](http://www.felsenmeer.ch)